

CASE FOR INVESTMENT

WE SUPPORT YOUTH IN THE NORTHERN BEACHES



Young people experiencing homelessness can be difficult to reach.

We work with the community to offer an integrated approach to solving issues of child and youth homelessness.

Our vision is that all children, young people and their families are empowered and supported to develop their full potential and have the life skills and opportunities to lead a full and active life in our community

For the past 10 years we have supported approximately 3,140 young people and their family members – (based on CYMS, referral data & Burdekin Statistics).

Over the past year The Burdekin Association have directly supported over 320 young people across our core accommodation and support programs.



*Our youth,
their future.*

CONTACT DETAILS

Suite 6 & 7, 2 Victor Road,
Brookvale, NSW 2100

Phone & Fax: 02 8976 1777 | 02 9939 0377

Email: burdekin.admin@burdekin.org.au

Website: www.burdekin.org.au

*An integrated approach to issues of
child and youth housing, intervention
and support.*

ABOUT

The Burdekin Association works with children and young people (12-24) who are experiencing homelessness or are at risk of homelessness.

We do this through five main program areas: Community and Family Youth Housing, Out of Home Care, Brokerage and Aftercare/Outreach. Our Model of Care is innovative and based on extensive research, understanding that the needs of the young people we assist are far greater than simply safe accommodation.



Burdekin model proposed by Professor Brian Burdekin in the seminal 1998 report: "Our Homeless Children".

The different facets of the program supported over 37 different research studies and papers conducted around youth housing issues.

Burdekin selected to coordinate the pilot Northern Beaches Project, partnering with schools in innovative early intervention.

Industry recognition

Burdekin selected to be the lead agency in the Avalon Youth Hub.

Using innovative and industry-leading support practices we help guide young people aged 12-24 to fully functional adulthood.

We believe all kids and youth have a right to live in safe, quality housing with care and support, education and community engagement.

"The fact is that there are homeless children and young people dying in Australia, some from suicide, others from neglect. That is not something our nation can ignore".
Professor Brian Burdekin, AO

Children and young people experiencing isolation and homelessness due to family breakdown and mental health issues can be very difficult to reach.

We provide accommodation, care and support and we go the extra mile to support our youth and their families.

Most homeless kids feel safer on the streets or on a friend's couch than in their own home.

62.7% Of our clients leave welfare or enter stable accommodation.

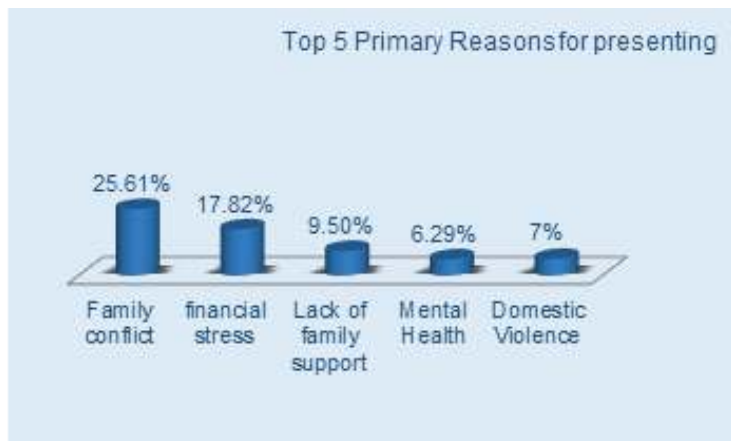
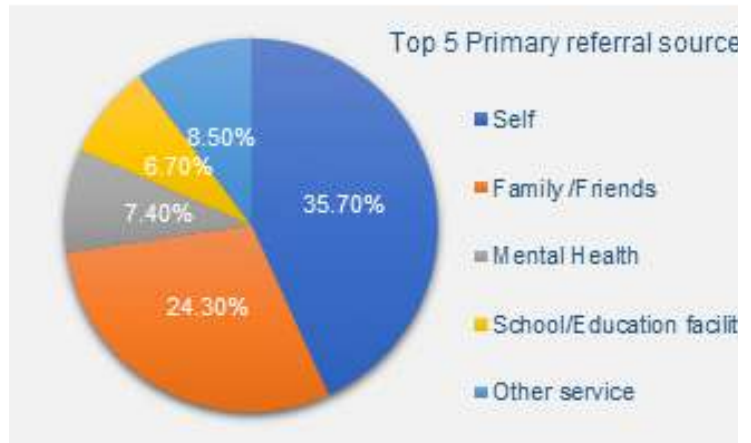
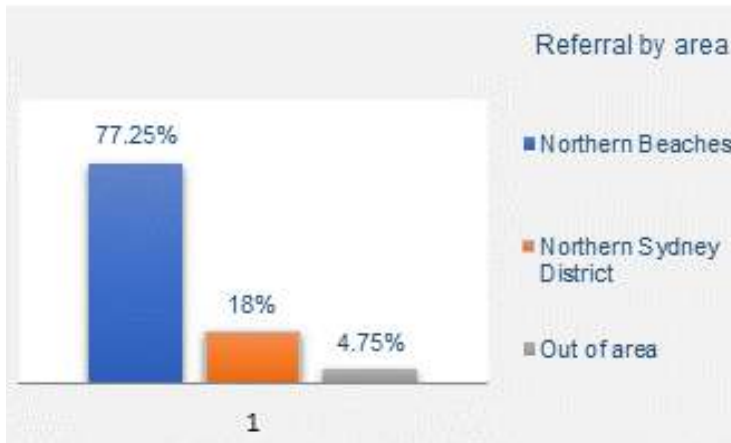
3,140 Young people and their families supported over 10 years.

Be part of the solution

Demographic statistics

The total cost to the Australian economy of additional health and justice services for homeless young people aged 12-24 is estimated at \$747 million annually. These costs do not include additional lifetime impact of early school leaving and low engagement with employment'.

*The cost of youth homelessness in Australia, Research Briefing.



*The data from the graphs on this page has been collated from the FACS client information system, BA's own client information system and referrals

Out of Home Care Program

2019 has seen immense growth in our Out of Home Care program, within our Supported Family Group Home model. We also introduced a Supported Independent Living program enabling young people in care to extend their stay up to the age of 19.

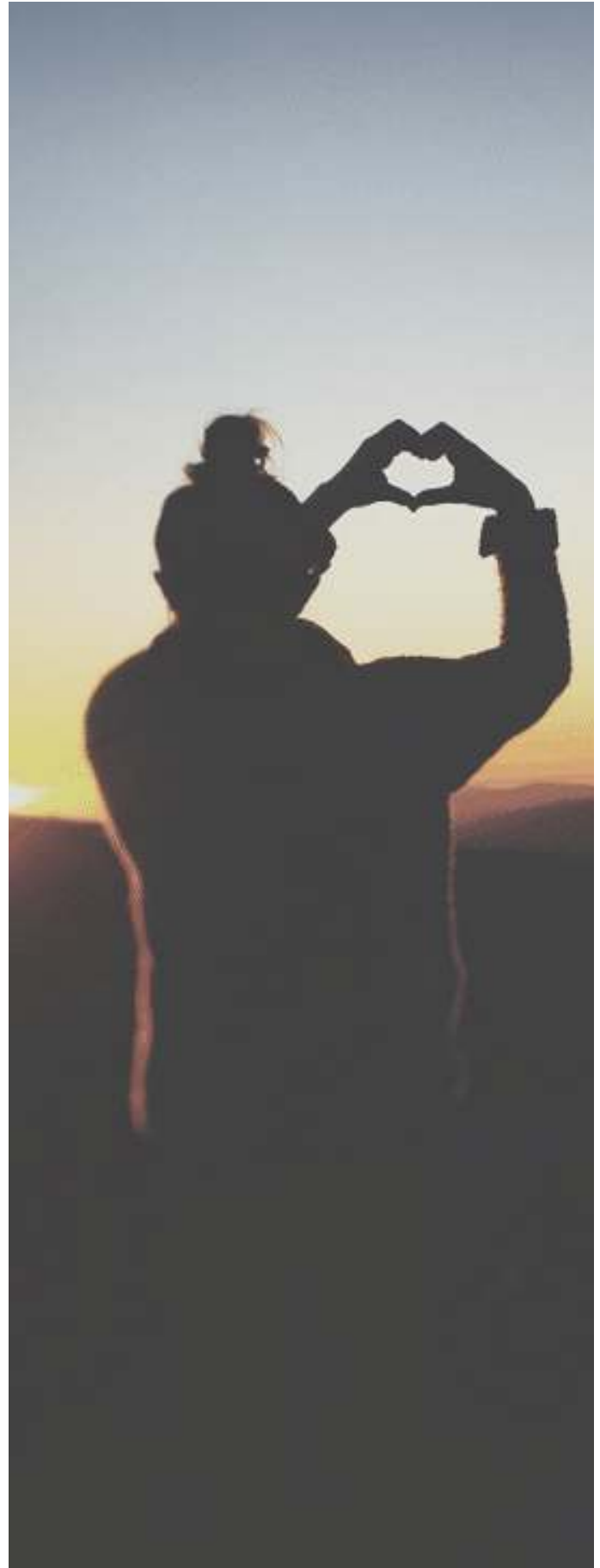
Our OOHC program grew 167% - this is us responding to community needs.

Within our OOHC program the quality of care and opportunities that the young people receive are well above the state average for young people leaving care.

Community and Family Program

This program provides Family Intervention supporting families with 12-24 year old's to reduce stress and conflict, manage adolescent behaviour in positive ways and increase the potential for family reconciliation. Outreach supports are accessible, practical and able to respond flexibly to the changing needs of the young person and their family.

Also in 2019 our Community Engagement program has been instrumental in the delivery of The Avalon Youth Hub, a truly collaborative and community-based program. In the first year of service this program has connected and enhanced the lives of young people and the community in the Pittwater region.



Education and Employment

Upon young people exiting our Out of Home Care program 95% of clients were engaged in education.

In the previous 7 years we have provided intensive and long-term accommodation and support to 39 children and young people. Of these 39, 44% continue to remain in our care (either the SFGH model or SIL), of those that have exited our OOHC program 23% moved into our Aftercare Youth Housing service often with the same Case Manager supporting them into their new placement, 18% exited OOHC to family and 9% exited to friends or previous carers.

Youth Housing

This program offers semi-supported, affordable housing for young people ready to make the transition to semi-independent living. The level of support is tailored to the needs of the young person or household which will vary over time. Housing options for teenage parents and their babies help establish new families and provide optimum opportunities for a stable future.

Top Five Reasons for Presenting to our Youth Housing Program:

- Relationship and family breakdown
- Current issue with housing (eviction/lease ending/affordability)
- Mental health
- Financial difficulties
- Lack of family/community support

Age of Young People Supported in Youth Accommodation:

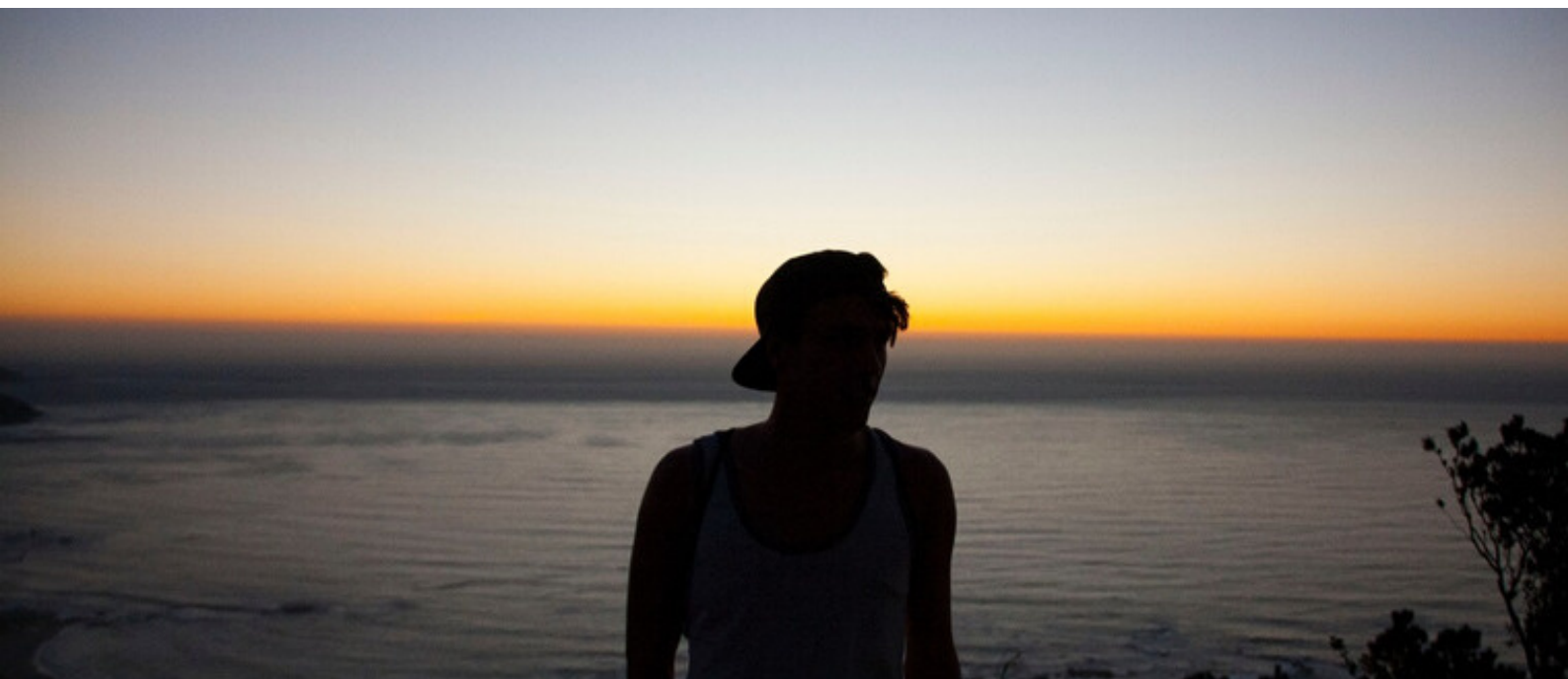
- 0-5 years 2.3%
- 16 years 3%
- 17 years 15.8%
- 18-19 years 36.1%
- 20-24 years 42.8%

Length of time in accommodation

- Up to 14 weeks 7.7%
- 14-26 weeks 15.4%

49.4% MALE

50.6% FEMALE



What happens when you become homeless?



- Move away – you often move schools, sometimes you stop going.
- Lost connections – you often lose contact and support from family and friends.
- Miss out – you miss out on basic needs like food, clothes and doctors.
- Become isolated – it is lonely and frightening, you feel rejected and often become ill – mentally and physically.
- Survive – you do what you can to survive including numbing the pain with drugs and alcohol.

Why we are needed?

Our core offerings are centred on the support of children and young people 12-24 who are at risk of homelessness. We know that the key drivers of this risk are related to school disengagement, family breakdown, mental health, drug and alcohol as well as financial pressures.

Our program areas are therefore focused on disrupting the risk factors with our community and family intervention program and the delivery of accommodation and support for those in need.

In 2019 The Burdekin Association has directly supported over 320 young people across our core accommodation and support programs.

Overall we desire to build resilience and capacity in young people to prevent the risk factors from emerging or taking hold as well as ensure young people that are in our accommodation are supported and equipped with the necessary tools to pursue their goals and to leave the organisation at a sustainable level of independence.

The nature of a locally based community organisation results in an ability to be very close and in touch with the needs of that community. In addition, many staff and board reside in our local community which further enhances the delivery of a very informed and considered plethora of programs delivered.

2018 - Northern Beaches Project

Became the lead agency in the Northern Beaches Project

2018 Notable awards

Our CEO Justene awarded with Pittwater Community Service Award.

2016 - Warringah Citizen of the Year

CEO Justene Gordon

Funding or anything?

2009 Most Progressive

Received a Certificate of Registration as a community housing provider under the Housing Act 2001 (NSW) as a class 4 provider in 2009.

2004 - moved to new home in Brookevale

Accommodating more staff

2nd organisation to gain accreditation through the Office of the Children's Guardian.

1998 - renamed The Burdekin Association Inc

After former Federal Human Rights Commissioner Brian Burdekin. (Brian wrote the 1989 'Our Homeless Children' report which detailed child poverty and abuse in Australia, and criticised governments for failing to look after children in their care.)

1997 - Central Office Dee Why

The physical transition of all staff to a central office in Dee Why.

1997 - Community Care Program

OOHC developed and began accommodating young people. Early Intervention and Family Support and Outreach, Aftercare programmes were trialled. (Collaboration on a range of intra-agency projects were progressing, including the establishment of a pregnant young women and young parents' accommodation project)

Burdekin was born

Recommendations following the review saw a radical reorganisation of the whole service, which has ultimately created the unique service known as Burdekin

Manly Warringah Youth Accommodation

Handed to Manly Warringah Youth Accommodation Association (as an 8 bed crisis centre) until it closed down in 1997 following a review. (During the 1990's the association also ran Birkley Cottage in Manly a 6 bed therapeutic medium and long-term refuge accommodation, and a Youth Housing Scheme at Dee Why operating 17 beds of semi-supported housing).

1980 - The Beginning - Granma's

It all began in Granma's crisis youth refuge in rural Ingleside opened by Neville Wran in 1980 and operated by 'The Godmothers'.

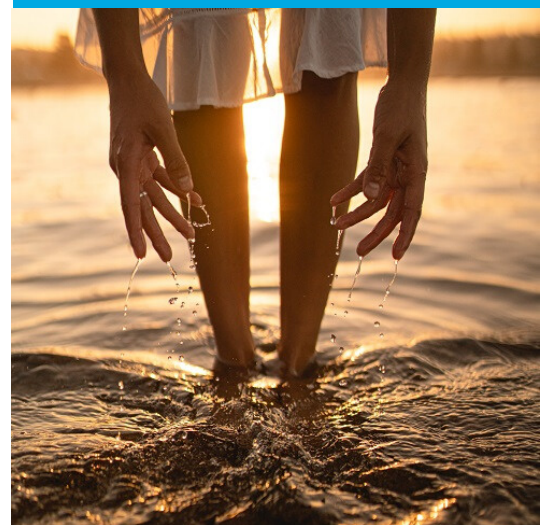
This year:

2019 - staff increased from 14 to 41

OOHC increased by 167%

2018 - Avalon Youth Hub

Became the lead agency in AYH, supporting youth for the first time in the Pittwater region.



The Burdekin Association is entering its 4th decade of service delivery in the Northern Sydney/Beaches community. From its humble beginnings as a small refuge and youth housing provider we have seen continued growth and development which remains community and client led. The strong thread of our relational and therapeutically driven care and support remain a key focus for the organisation

Teenage years may be fraught with arguments, power struggles, lack of connection and communication, risk taking, rebellion and parental control.

Disrupted living arrangements, neglect and physical, sexual and emotional abuse.

Diagnosed or undiagnosed mental health disorder: anxiety, depression, bi-polar or suicidal thoughts.

Multiple care placements and schools, trauma, instability and unpredictability.



Youth homelessness IS

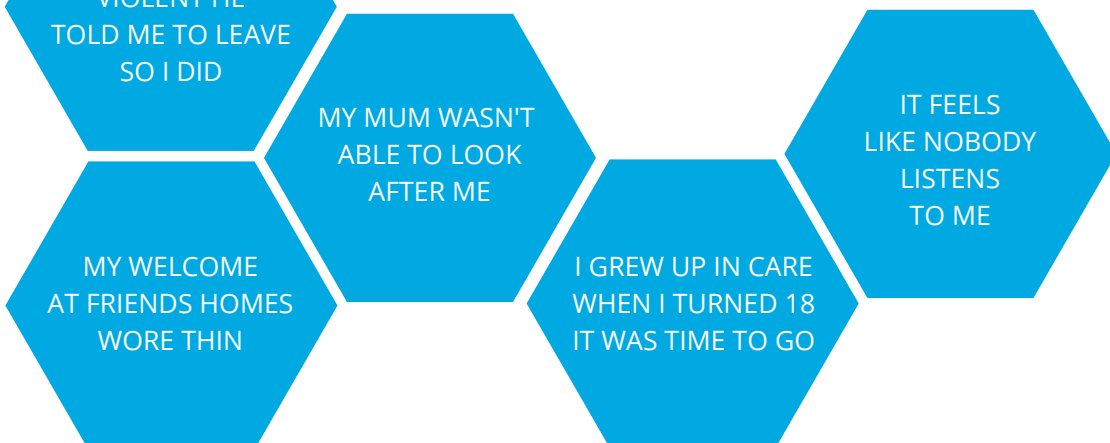
If family don't agree with lifestyle, gender identity or sexual orientation

Youth homelessness is NOT



Most youth homelessness is hidden. Often the young person doesn't even realise they're homeless. Sleeping on friends couches or overcrowded accommodation.

Young people say



Our young people at a glance

2 Completed degrees in 2014

1 Continuing with double degree, 3rd year 2015

1 First year pharmacy degree complete and another ongoing 2015

2 have almost completed nursing degrees

1 started a teaching degree in 2014

5 young people completed their HSC in 2014

MY PARENTS ARGUED ALL THE TIME

My Dad was violent. He told me to leave so I did.

I STAYED WITH FRIENDS FOR A WHILE.

Their parents said I had to leave. I sometimes stayed with strangers, I sometimes slept rough.

I FOUND BURDEKIN THROUGH A MATE.

They gave me somewhere to live, a case worker and helped me get back on my feet. I finished school and now I am studying at TAFE.

WITHOUT BURDEKIN I DON'T KNOW WHERE I WOULD BE TODAY.

It's still hard, but I feel safe and cared for. Burdekin are my family.

WITHOUT OUR SERVICES YOUNG PEOPLE HAVE NOWHERE TO GO

We need your support to give them a future they deserve!

Please visit: www.burdekin.org.au/get-involved/donate/ to make your pledge today and help a young person who deserves a fair start in life.

"The transparency, efficiency, passion and outcomes that The Burdekin Association achieve is to be applauded. To work with them on a housing project and see how they diligently and efficiently achieved value for money, which in turn ensured the children and carers were awarded with an amazing home was a credit to the amazing staff."

Ian Menzies, National Director, Quantity Surveyor, WT Partnership

"You are the true heroes and give kids with little hope an understanding that they still matter. Thank you for what you do. Because of your work kids can chase their dream."

Former NSW Premier, Mike Baird via facebook

SUPPORT OUR LOCAL KIDS

Donate

the burdekin
ASSOCIATION

*Our youth.
their future.*